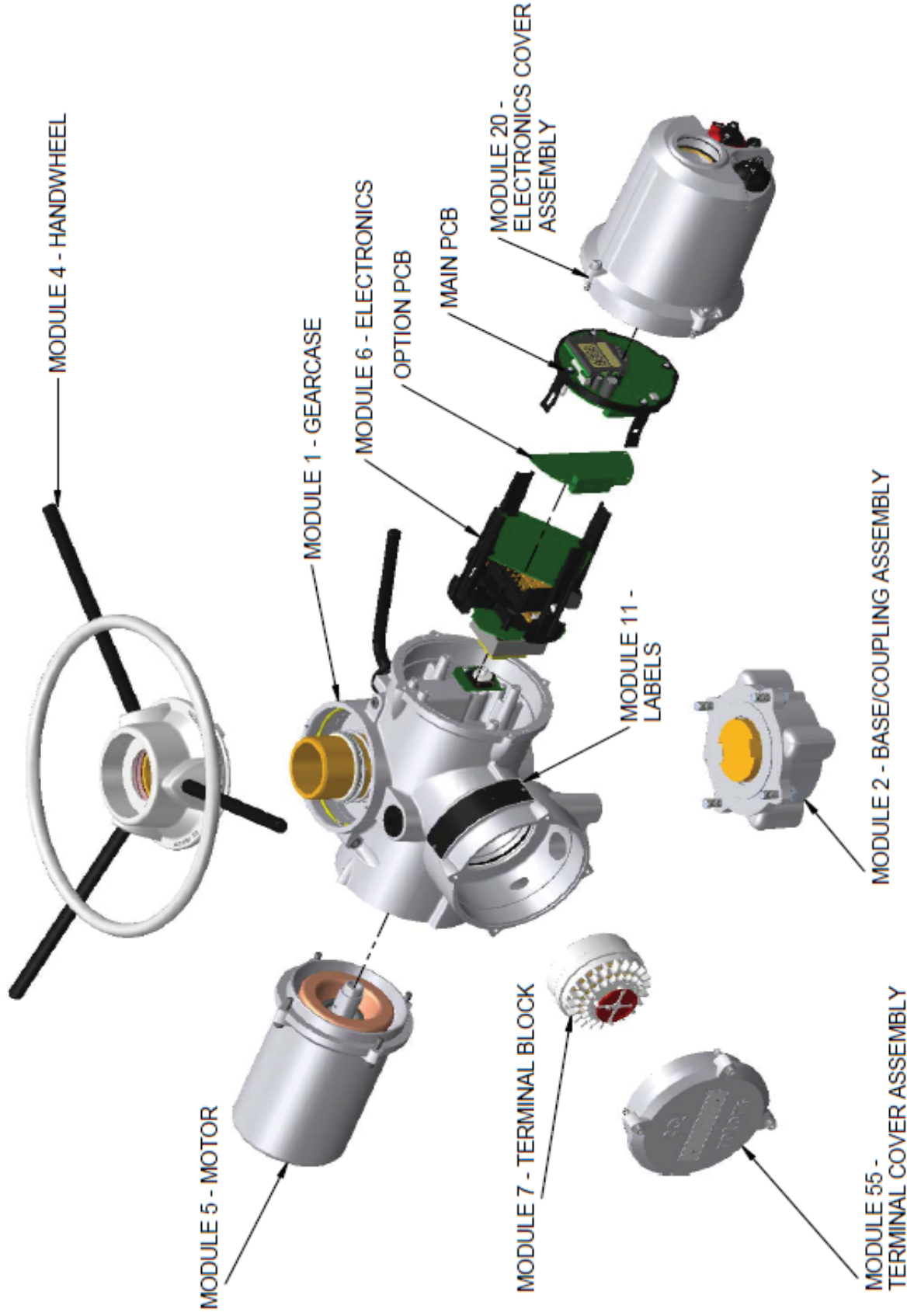


Title IQT EXPLODED VIEW - MODULE LEVEL

Drawn P. Exton

Date 020609



Title TYPICAL EXPLODED VIEW OF IQ MODULES

Drawn S.ADAM

Date 230909

MODULE BREAKDOWN

MODULE	A-Range	NA	IQ + IQmk2	AQIL	Q
01	Gearcase	Gearcase	Gearcase	Gearcase	Gearcase
02	Drive Bush	Drive Bush	Base Assy / Drive Bush	Base Assy / Drive Bush	Base Assy / Drive Bush
03	Switch Mechanism	Switch Mechanism		Switch Mechanism	Switch Mechanism
04	Handwheel	Handwheel	Handwheel		
05	Motor	Motor	Motor	Motor	Motor
06	Syncropak		Electronic	Electronic	Pak
07	Syncroset	Syncroset	Terminal Block & Looms	Terminal Block	Set
08	AOP1	AOP1			
09	Interrupter Timer				
10	Folomatic		Isolator/Disconnect	Electronic Options	Electronic Options
11	Labels	Labels	Labels	Labels	Labels
12	Plugs & sockets		Plugs & sockets		
18	Linear Assy		Linear Assy		
20	S.M / AOP1 Cover	S.M / AOP1 Cover	Electronic Cover		
27	Pedestal		Pedestal	Top Cover	
28	Upward Stub Shaft		Upwards Stub Shaft		
29	Downward Stub Shaft		Downwards Stub Shaft		
30	CPT				
31	Cooper Oil Kits		Cooper Oil Kit		Potentiometer
33	Blinker and Potentiometer	Potentiometer			
34	Castell H/W Locking Device		Castell H/W Locking Device		
35				Failsafe	
40	Pakscan			Pakscan	
41				Profibus	
55	Final Assy	Final Assy	Final Assy & Terminal Cvr	Final Assy	Terminal Cover
60				Signal Isolator	
70	Thrust Compensator	Thrust Compensator	Thrust Compensator		

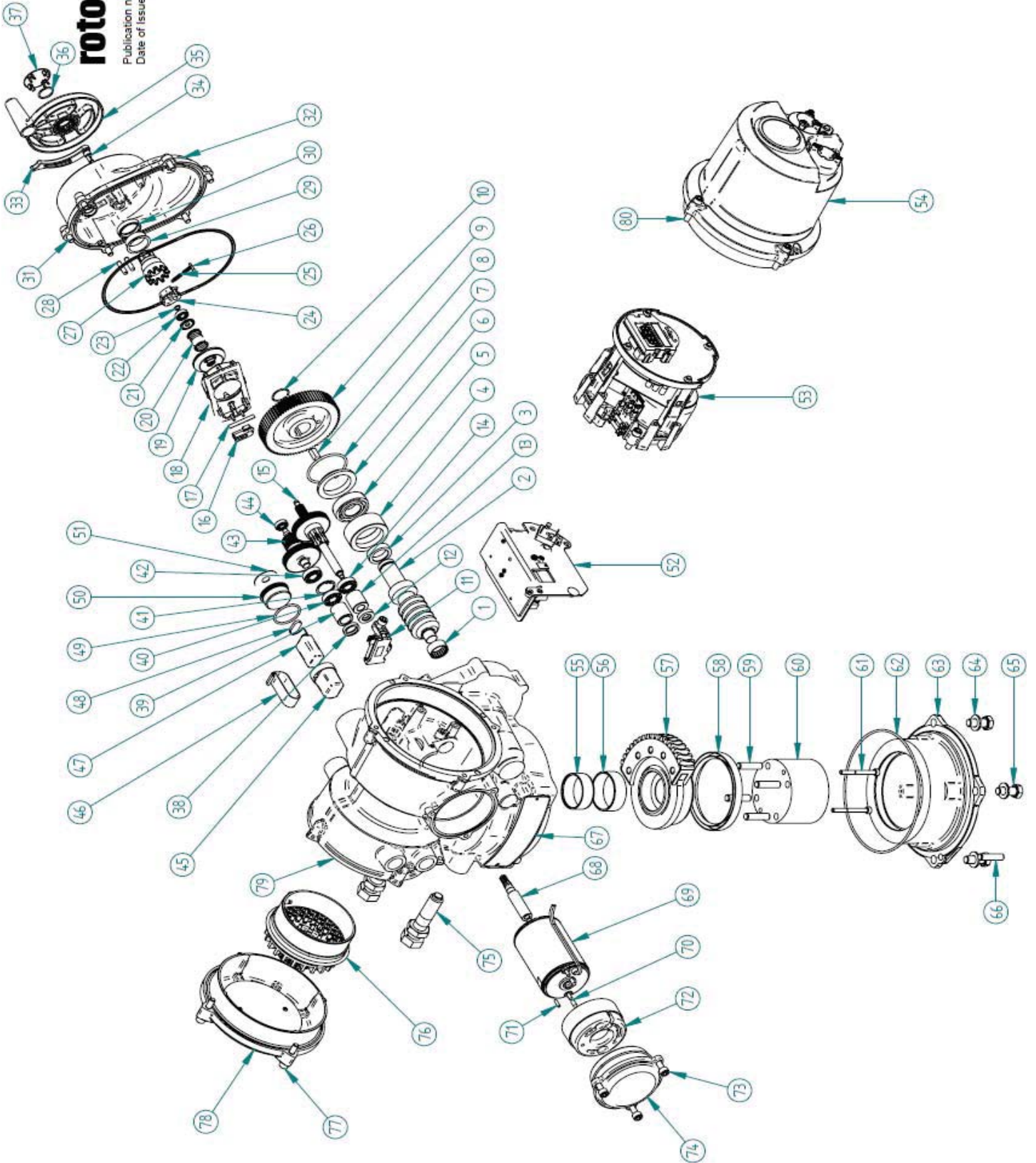


Actuator Exploded View



rotork

Publication number: DOC700-1
Date of issue: Apr 06

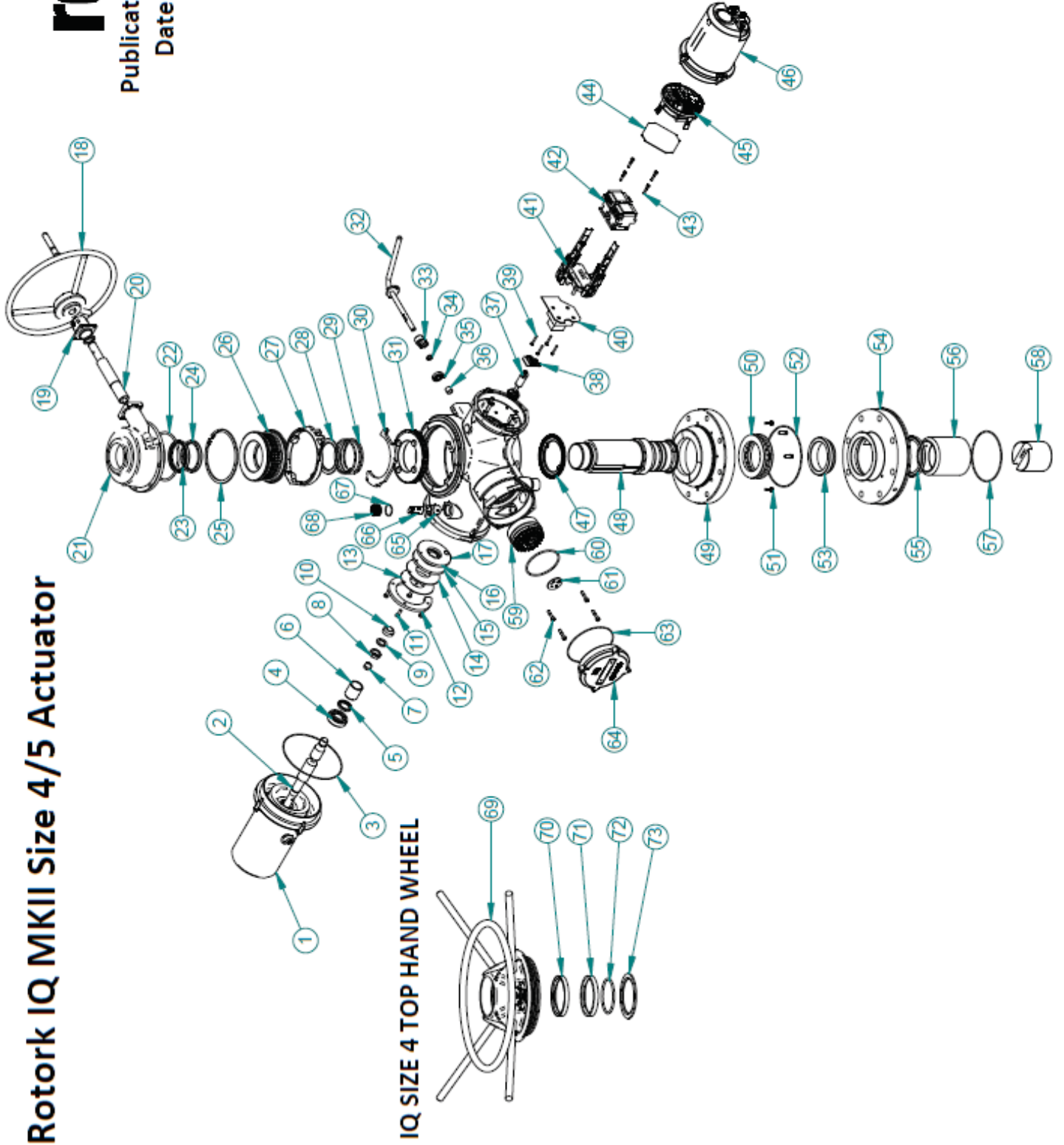


Rotork IQ MKII Size 4/5 Actuator

rotork

Publication Number DOC903

Date of Issue 01/11



Distributed by | Distribuido por :



ANYTHING
≈ FLOWS ≈

INFO@ANYTHINGFLOWS.COM

WWW.ANYTHINGFLOWS.COM

Flow Control , our passion ®

Life Flows on ™



SCAN ME