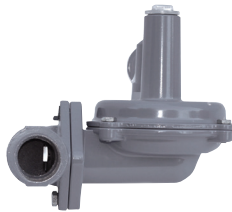


REGULATORS



P627/R627

- Pilot operated for Pressure Factor Measurement Applications
- Filter available
- non-relieving, internal relief and monitor



P140

- Compact Residential Regulator
- Complies with ANSI B109.4
- Straight or Angle Body



P201/P202

- P201 - Non-Relieving, P202 - Relieving
- External Registration available
- 14" Diaphragm
- Available as "head-only"



P301/P302

- P301 - Non-Relieving, P302 - Relieving
- External Registration available
- 7" Diaphragm
- Available as "head-only"
- Interchangeability with P200 body

Model	Use	Max Inlet	Outlet Range	Max Outlet Flow	Port Sizes Inches
P627	Direct Operated - Farm Tap, City Gate, Gas Gathering	2,000 psi	5 to 500 psi 7 ranges	172,000 scfh Cv 5.30	3/4, 1, 2, Socket, Flanged
R627	Direct Operated - Farm Tap, City Gate, District Gate, Gas Gathering	2,000 psi	5-500psig across 7 ranges	172,000 scfh Cv 5.30	3/4, 1, 2, Socket, Flanged
P140	Direct Operated - 5" Diaphragm, Light Commercial, Industrial, Residential Partial Relief	125 psi	5.0" WC to 5 psi 7 ranges	4,300 scfh Cv 2.28	3/4, 3/4x1, 1, 1 1/4
P201	Direct Operated - 14" Diaphragm, Commercial, Industrial, Non-Relieving	125 psi	2" WC to 10 psi 11 ranges	30,000 scfh Cv 26.0	1 1/4, 1 1/2, 2, Flanged
P202	Direct Operated - 14" Diaphragm, Commercial, Industrial, Partial Relief	125 psi	2" WC to 10 psi 11 ranges	30,000 scfh Cv 26.0	1 1/4, 1 1/2, 2, Flanged
P301	Pilot Operated - 7" Diaphragm, Commercial, Industrial, Non-Relieving	125 psi	3" WC to 8 PSI 8 Ranges	17,000 scfh Cv 7.5	1 1/4, 1 1/2, 2, Flanged
P302	Pilot Operated - 7" Diaphragm, Commercial, Industrial, Partial Relief	125 psi	3" WC to 5.5 PSI 7 Ranges	17,000 scfh Cv 7.5	1 1/4, 1 1/2, 2, Flanged

REGULATORS



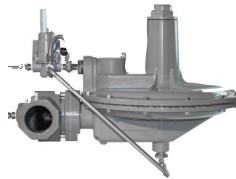
P203

- Integrated monitor operates independently of main regulator
- Test monitor in the field using Kit #971-203-T00



P208/P209

- PSX2 Module operates independently of main regulator
- Internal or external registration



F200

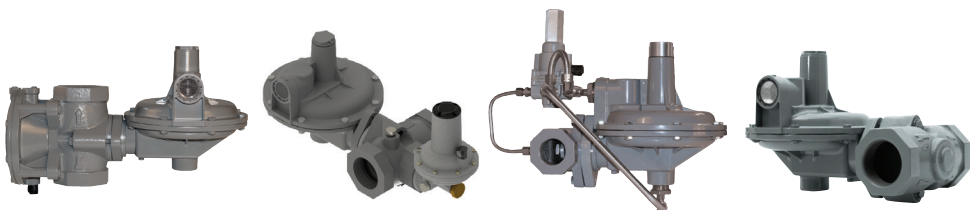
- Pilot operated
- Stainless steel tubing/ fittings
- Zero bleed device



P212

- Minimize Sudden Downstream Load Change
- Wide Pressure Ranges
- Full Relief Valve

Model	Use	Max Inlet	Outlet Range	Max Outlet Flow	Port Sizes Inches
P203	Commercial/Industrial/service, Gas engine control, Gate applications	125 psi	2" WC to 3.25 psi Monitor Springs across 13 ranges	25,000 scfh Cv 26.0	1 1/2x2, 2 Flanged
P208	Direct Operated - 14" Diaphragm, Commercial, Industrial - Slam Shut, Non-Relieving	125 psi	2.0" WC to 10 psi 11 ranges	25,000 scfh Cv 26.0	1 1/2x2, 2 Flanged
P209	Direct Operated - 14" Diaphragm, Commercial, Industrial - Slam Shut	125 psi	2.0" WC to 10 psi 11 ranges	25,000 scfh Cv 26.0	1 1/2x2, 2 Flanged
F200	Direct Operated - 14" Diaphragm, Commercial, Industrial Fixed Factor Billing Non-Relieving	125 psi	4.0" WC to 10 psi 3 ranges	37,290 scfh Cv 26.0	1 1/4, 1 1/2, 2 Flanged
P212	Compressors, Gas Engines, Service Regulators	125 psi	2" WC - 5 psi 9 ranges	46,760 scfh & Cv 20.1	1 1/4, 1 1/2, 2, 2 Flanged



P303

- integrated monitor operates independently of main regulator
- Test monitor in the field using Kit #971-303-T00

P308

- PSX2 Module operates independently of main regulator
- internal or external registration

F300

- Pilot operated
- stainless steel tubing/ fittings
- zero bleed device

P300 with 2" body

- Minimize sudden downstream load change
- Wide pressure range
- P302 has internal relief value for overpressure protection

Model	Use	Max Inlet	Outlet Range	Max Outlet Flow	Port Sizes Inches
P303	Direct Operated/Monitor 7" Diaphragm, Commercial, Industrial, Partial Relief	125 psi	4.0" WC to 2.25 psi 6 ranges	17,600 scfh Cv 7.5	1 1/4, 1 1/2, 2 Flanged
P308	Direct Operated - 7" Diaphragm, Commercial, Industrial - Slam Shut, Non-Relieving	125 psi	2.0" WC to 10 psi 11 ranges	5,000 scfh Cv 8.57	1 1/2x2, 2 Flanged
F300	Pilot Operated - 7" Diaphragm, Commercial, Industrial	125 psi	2 to 20 PSI 2 Ranges	5,000 scfh Cv 8.57	1 1/4, 1 1/2, 2 Flanged
P300 w/2" body	Direct Operated - 7" Diaphragm, Commercial, Industrial	125 psi	3" to 8 psi 8 ranges	17,600 scfh Cv 7.5	2" NPT, Flanged, Socket Weld

REGULATORS



P143

- Small Commercial/ Large Residential Regulator
- Complies with ANSI B109.4
- Boiler/Generator, Single End User Applications
- Low Pressure Cut-off Version Available



P600

- Pressure loaded regulator, switching valve, or monitoring regulator
- Available with non-relieving, internal relief valve, or monitoring regulator option
- Full Cast Iron Construction



P133

- Custody transfer and single user applications
- Inline maintenance
- Balanced diaphragm design
- External sense line



P133K

- Custody transfer and single user applications
- Inline maintenance
- Balanced diaphragm design
- External sense line

Model	Use	Max Inlet	Outlet Range	Max Outlet Flow	Port Sizes Inches
P143	Direct Operated - 7" Diaphragm, Commercial, Industrial, Partial Relief	125 psi	3.5" WC to 6 psi 11 ranges	4,400 scfh Cv 0.455	3/4, 1, 1 1/4
P600	Direct Operated - 7" Diaphragm, Commercial, Industrial, Partial Relief	150 psi	4" to 7psi 6 ranges	6,600 scfh	3/4, 1
P133	Direct Operated - 14" Diaphragm, Industrial Commercial	60 psi	2" WC to 10 psi 10 ranges	170,000 scfh Cv 51.40	2, Flanged
P133K	Direct Operated - 10" Diaphragm, Commercial, Industrial	150 psi	2 to 60 psi 7 ranges	370,000 scfh Cv 51.40	2, Flanged



P99

- Custody transfer and single user applications
- Inline maintenance
- External sense line



P95H

- Gas, Steam, or Liquid Service
- Elastomer or metal diaphragm



P119

- On/Off or Throttling Control
- NACE construction available

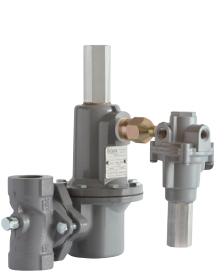


P630

- Farm Tap, single user and custody transfer applications
- Low and High pressure variations

Model	Use	Max Inlet	Outlet Range	Max Outlet Flow	Port Sizes Inches
P99	Pilot Operated - Boilers, Pneumatic Headers, Large Commercial Gas	1,000 psi	3" WC to 100 psi 8 ranges	265,000 scfh Cv 24.0	2, Flanged
P95H	Direct Operated - Air, Steam, Liquids, Industrial & Heating Gases	300 psi	5 to 150 psi 8 ranges	199,000 scfh Cv 12.50	1/2, 3/4, 1, 1 1/2, 2 Flanged
P119	Throttling or On/Off Valve - Fuel Valve for Heaters & Treaters, Liquids & Gases	150 psi	3 to 60 psi 4 ranges	Cv 7.0	3/4, 1, 1 1/4
P630	Direct Operated - First Stage High Pressure, Farm Tap, Gas Gathering	1,500 psi	3 to 500 psi 10 ranges	141,000 scfh Cv 8.20	1, 2, Flanged

REGULATORS



F627

- Pilot operated for Pressure Factor Measurement Applications
- Filter available



W627

- Designed for liquid service
- External pressure registration available



L627

- LP Gas Regulator
- UL144 Listed



PL81/PL84

- Aluminum Body/Bonnet
- Pressure Reducing or Back Pressure configurations

Model	Use	Max Inlet	Outlet Range	Max Outlet Flow	Port Sizes Inches
F627	Pilot Operated - Farm Tap or Gate, ideal for Fixed Factor	250 psi	5 to 100 psi 2 ranges	639,000 scfh Cv 5.30	3/4, 1, 2, Socket, Flanged
W627	Direct Operated - Liquid Service High & Low Pressure	900 psi	10 to 500 psi 3 ranges	82 gpm Cv 3.76	3/4, 1, 2, Flanged
L627	Direct Operated - 8" Diaphragm, Commercial, NG Engines - Relieving Optional	200 psi	15 to 40 psi 2 Ranges	6,500 scfh Cv 7.0	3/4, 1, 2
PL81	Pilot Regulator, Ideal for P627	250 psi	0 based to 100 psi 2 ranges	N/A	1/4
PL84	Pilot Regulator, Ideal for F303 & F203	125 psi	4.0" WC to 20 psi 4 ranges	137,000 scfh Cv 17.50	1/4

RELIEF/BACK PRESSURE VALVES



P98H

- Back Pressure Regulator/Relief Valve
- Gas, Steam, or Liquid applications



P255

- Token or Full Relief Applications
- Brass or Stainless Construction



P289

- Throttling-style back pressure regulator
- Distribution and fuel gas relief applications



L289

- Throttling-style back pressure regulator for low pressure service
- Lightweight Aluminum body

Model	Use	Max Inlet	Outlet Range	Max Outlet Flow	Port Sizes Inches
P98H	Direct Operated - Back Pressure/Relief in Steam, Liquids, Oil Production	300 psi	5 to 200 psi 9 ranges	157,000 scfh Cv 16.60	3/4, 1, Flanged
P255	Direct Operated - Relief Pop-Off/Reset Valve, Gas Distribution, Air	300 psi	50 to 150 psi 7 settings	60,000 scfh Cv 5.25	3/4, 1
P289	Back Pressure/Relief - Gas Distribution, Liquids, Air, Propane Gas	1" - 100 psi 2" - 25 psi	7" WC to 75 psi 9 ranges	120,000 scfh Cv 17.50	3/4 x 1, 1, 2
L289	Back Pressure/Relief - Gas Distribution, Liquids, Air, Propane Gas	25 psi	5" WC to 10 psi 6 ranges	120,000 scfh Cv 17.50	3/4, 1, 2 All 2" Outlet

RELIEF/BACK PRESSURE VALVES



F289

- Pilot Operated Throttling-style Back Pressure Regulator
- Low pressure, high flow device



P630R

- Iron or Steel construction
- NACE Construction Available
- Natural Gas and corrosive applications



P1808

- Pilot operated Relief Valve or Back Pressure Regulator
- Straight or Angle Body
- Liquid or Gas service



PL82/PL83

- Aluminum Body/Bonnet
- Pressure Reducing or Back Pressure configurations

Model	Use	Max Inlet	Outlet Range	Max Outlet Flow	Port Sizes Inches
F289	Pilot Operated Back Pressure/Relief - Gas Distribution, Air	1" - 100 psi 2" - 15 psi	14" WC to 100 psi 5 ranges	137,000 scfh Cv 17.50	3/4 x 1, 1, 2
P630R	High Flow Relief - Field Adjustable, Gas, Air	500 psi	3 to 250 psi 9 ranges	48,000 scfh Cv 12.08	1, 2, Flanged
P1808	Back Pressure/Relief - Pilot Operated, Gas Distribution, Liquids, Air	150 psi	3 to 125 psi 3 ranges	258,000 scfh Cv 51.0	2" - Straight, Angle or Flanged
PL82	Pilot Regulator, Ideal for 289 & P1808 - PSI ranges	250 psi	14" WC to 125 psi 6 ranges	N/A	1/4
PL83	Pilot Regulator, Ideal for P289 & P1808 - WC Ranges	250 psi	14" WC to 125 psi 6 ranges	N/A	1/4



P32

- Aluminum Body/ Bonnet Construction
- Non- Relieving
- NACE Construction available
- UL 144 Listed



P36

- Preset Regulator
- Tamper Resistant Cover
- Aluminum Body/ Bonnet Construction
- Non- Relieving
- NACE Construction available
- UL 144 Listed



P37

- Balanced Pintle Design
- Aluminum Body/ Bonnet Construction
- Non- Relieving
- UL 252 Listed



P38

- High Flow Version of P37
- Balanced Pintle Design
- Aluminum Body/ Bonnet Construction
- Non- Relieving
- UL 252 Listed

Model	Use	Max Inlet	Outlet Range	Max Outlet Flow	Port Sizes Inches
P32	Direct Operated - Instrument Supply, Final Stage	250 psi	0 based to 120 psi 4 ranges	1,200 scfh Cv 0.105	1/4
P36	Direct Operated - Instrument Supply, Final Stage	250 psi	0 based to 60 psi 3 ranges	1,200 scfh Cv 0.105	1/4
P37	Direct Operated - Instrument Supply, Final Stage	400 psi	0 based to 125 psi 4 ranges	6,600 scfh Cv 0.443	1/2, 3/4
P38	Direct Operated - Instrument Supply, Final Stage	400 psi	0 based to 125 psi 4 ranges	15,000 scfh Cv 1.10	3/8, 1/2, 3/4, 1

* Flow ratings at wide open flow / Methane



P39

- Brass, Nickel-Plated Brass or Stainless Steel Construction
- Four-seat valve disk block assembly can be easily rotated to provide a fresh sealing surface
- Non-Relieving



P40

- Aluminum Body/ Bonnet Construction
- Relieving & Non-Relieving Available
- NACE Construction Available



P50

- Aluminum Body/ Bonnet Construction
- 40-Micron Filter standard, 5-Micron Available
- Relieving & Non-Relieving Available
- NACE Construction Available



P52SS

- Stainless Steel Construction
- 40-Micron Filter standard, 5-Micron Available
- Relieving & Non-Relieving Available

Model	Use	Max Inlet	Outlet Range	Max Outlet Flow	Port Sizes Inches
P39	Direct Operate - High Pressure Reducing for Instrument Supply	6,000 psi	5 to 500 psi 6 ranges	12,000 scfh Cv 0.130	1/4
P40	Direct Operated - Instrument Supply, Final Stage, Self-Relieving	250 psi	0 based to 120 psi 4 ranges	1,200 scfh Cv 0.105	1/4
P50	Direct Operated - Instrument Supply, Particulate and Condensate Collection	250 psi	0 based to 120 psi 4 ranges	1,200 scfh Cv 0.105	1/4
P52SS	Direct Operated - Stainless Instrument Supply, Particulate and Condensate Collection	425 psi	3 to 150 psi 4 ranges	6,300 scfh Cv 0.782	1/4, 3/8, 1/2, 3/4, 1

* Flow ratings at wide open flow / Methane



P70

- Aluminum Body/ Bonnet Construction
- Relieving & Non-Relieving Available
- NACE Construction Available



75/P79V

- Aluminum body and housings
- Bypass valve standard, non-relieving, and high relief options available
- Volume Boosting Applications



P912

- Zinc Body/Bonnet
- U144 Listed

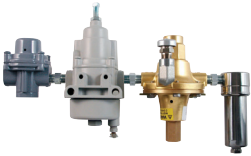


P289RC

- Used in fast-acting control valves, and surge/recycle operations

Model	Use	Max Inlet	Outlet Range	Max Outlet Flow	Port Sizes Inches
P70	Direct Operated - Instrument Supply, Final Stage, Self Relieving	250 psi	0 based to 150 psi 5 ranges	5,280 scfh Cv 0.462	1/4, 3/8, 1/2
75/P79V	Direct Operated - Relief Pop-Off/ Reset Valve, Gas Distribution, Air	75/250 psi P79V/400 psi	1:1 to 1:6 ratio 4 options	12,000 scfh Cv 0.61	3/8, 1/2, 3/4, 1
P912	Direct Operated - Low Pressure/ Low Flow, Final Stage, Minimal Relief	250 psi	3" WC to 5 psi 6 ranges	750 scfh Cv 0.087	1/4, 3/8
P289RC	Pilot Operated Back Pressure/Relief - Gas Distribution, Air	125 psi	14" WC to 100 psi 5 ranges	137,000 scfh Cv 17.50	3/4 x 1, 1

* Flow ratings at wide open flow / Methane



P1367

- Two-stage pressure cut, two filtering elements and three relief concepts
- Vertical or horizontal mounting options
- Filter drain available



P350

- Stainless (NACE) or Aluminum Construction
- Glass microfiber filter element
- Filter drain available
- 1, 5, 25 or 50 Micron



T170

- Explosion Proof Motorized Regulator
- DC Stepper Motor with gear driven range screw
- Fine resolution valve control

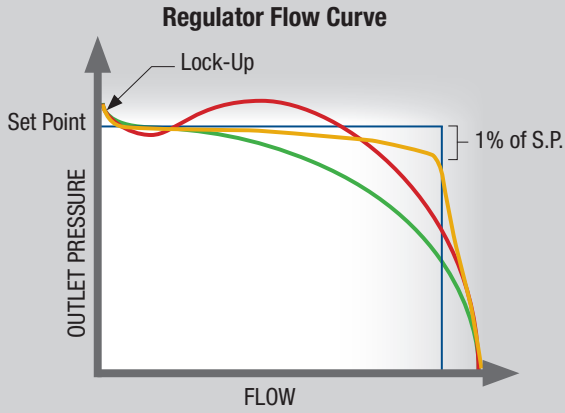


T2000

- Explosion Proof I/P, E/P Transducer
- FM/CSA/CE compliance
- 4-20mA, 1-5V, 1-10V Control Signal

Model	Use	Max Inlet	Outlet Range	Max Outlet Flow	Port Sizes Inches
P1367	High to Low Instrument supply train w/ relief	4,000 psi	20 or 35 psi	20 scfh Cv 0.001	1/4
P350	Aluminum & Stainless Particulate Filter	4,000 psi	N/A	2,400 scfh Cv 1.0	1/4
T170	Explosion Proof Motorized Regulator	150 psi	0.5-30 psi	40 scfm	1/4, 3/8, 1/2"
T2000	Explosion Proof Transducer	140 psi	0-120 psi	21 scfm	1/4

* Flow ratings at wide open flow / Methane



Ideal Regulator

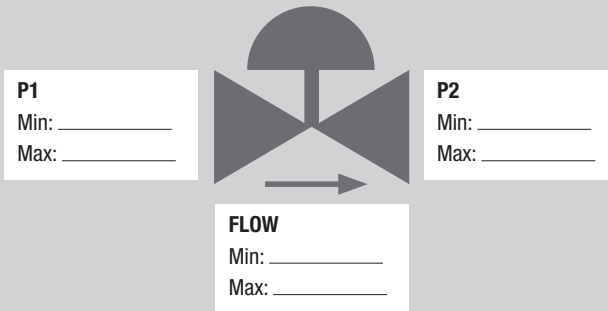
Spring Effect – “Droop”

Closing Force – “Lock-up”

Negative Droop – “Boost”

Pilot Droop – +/- 1% of Set Point

Minimum Info Needed To Size A Regulator





General Service Gauges

- Grade B Accuracy
- 1.5", 2", 2.5", 3.5", 4.5" case
- Lower, Center Back, U-Clamp, Left & Right Mounts
- 1/8 or 1/4" NPT Steel & Brass
- 0 through 5,000 psi options



Severe Service Gauges

- Grade A or B Accuracy
- 63mm or 100mm case
- Lower, Center Back, U-Clamp & Front Flange Mounts
- 1/8" or 1/4" NPT
- Stainless Steel-Dry, Glycerin or Silicone fill
- 0 through 10,000 psi options



Process Gauges

- Grade 2A Accuracy
- 4.5", 6" case
- Turret, Back Flange, Lower or Lower Back
- 1/4" or 1/2" NPT
- Stainless Steel or Copper
- Dry, Glycerin or Silicone fill
- 0 through 20,000 psi options



Gas Test Gauge Set

- Includes 2-1/2" dial size gauge
- Triple Scale: Oz./in², in. H₂O & kPa
- Provided in gray polyethylene case with 3 ft. of rubber tubing



Tridicators

- Grade B Accuracy
- 2.5" round or 3.5" square case
- Back or Lower Mount
- 1/4" or 1/2" NPT
- Steel & Copper
- 0 through 300 psi options
- Temperature range from 60° through 260° F



Bi-metal Thermometers

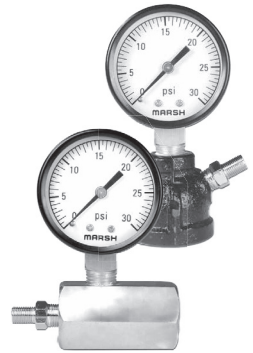
- Accuracy of +/- 1%
- 2", 3", or 5" case
- Center Back or Adjustable
- 1/4" or 1/2" NPT
- Stainless Steel
- Temperature range from -50° through 1000° F



Special Application Pressure Gauges

Fully Customizable:

- Size
- Pressure Range
- Temperature
- Connections
- Material
- Face Graphics/ Labeling



Gas Test Gauge

- Hex or bell Type mounting
 - 15 to 100 psi pressure ranges
 - Steel case and brass internals
- Use to pressure test all new gas installations for leaks and passing inspection codes.

BALL VALVES



BNW Series

- Full Stainless Steel
- Seal welded 2-pc body design 2000 psi CWP
- Full Port
- Locking Handle
- Blow-out proof stem
- Materials per NACE MR0175 NPT Threads per ASME B1.20.1

BB2 Series

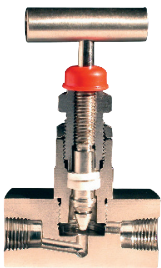
- Lead Free Brass
- 600 WOG
- Full Port
- Locking Handle
- 1/4" – 4" NPT – FXF
- NPT Threads per ASME B1.20.1

BCW Series

- Carbon Steel Body/316SS Trim
- Seal welded 2-pc body design
- 2000 psi CWP
- Full Port
- Locking Handle
- Blow-out proof stem

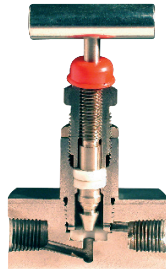
NPT	BNW Series Part #	BB2 Series Part #	BCW Series Part #
1/4"	BNWFT0250A-BG	BB2FT0250A-BG	BCWFT0250A-BG
3/8"	BNWFT0375A-BG	BB2FT0375A-BG	BCWFT0375A-BG
1/2"	BNWFT0500A-BG	BB2FT0500A-BG	BCWFT0500A-BG
3/4"	BNWFT0750A-BG	BB2FT0750A-BG	BCWFT0750A-BG
1"	BNWFT1000A-BG	BB2FT1000A-BG	BCWFT1000A-BG
1-1/4"	BNWFT1250A-BG	BB2FT1250A-BG	BCWFT1250A-BG
1-1/2"	BNWFT1500A-BG	BB2FT1500A-BG	BCWFT1500A-BG
2"	BNWFT2000A-BG	BB2FT2000A-BG	BCWFT2000A-BG

NEEDLE VALVES



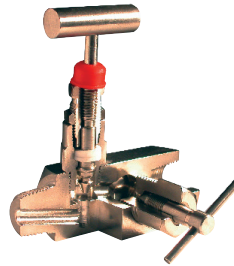
VHS & VHC Series

- Metal-to-Metal Seat Needle Valves
- Bonnet locking pin prevents accidental removal
- Hardened and ground self-centering, non-rotating tip



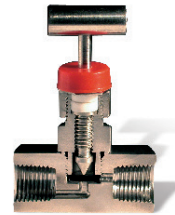
VSS & VSC Series

- Soft-Seat Needle Valves
- Bonnet locking pin prevents accidental removal
- Hardened and ground self-centering, non-rotating tip



BHS & BHC Series

- Block/Bleed Needle Valves
- Hardened and Ground 316 Stainless Steel, Self-Centering, Non-Rotating Tip



MHS & MHC Series

- Miniature Needle Valves
- Metal-to-Metal and Soft Seat
- Bonnet locking pin prevents accidental removal

Model	Use	Material	Pressure Temperature Rating	
VHS VHC	Ideal where caustic and corrosive material are being used. Metal to metal.	ASTM A182F 316 stainless steel or ASTM A105 forged single piece steel, plated (carbon)	10,000 PSI (70,000 kPa) @ 100°F [38°C]	4,000 PSI (28,000 kPa) @ 500°F [260°C]
VSS VSC	Ideal where bubble-tight shutoff of liquids or gases are required.	ASTM A182F 316 stainless steel or ASTM A105 forged single piece steel, plated (carbon)	6000 PSI (42,000 kPa) @ 100°F [38°C]	4000 PSI (28,000 kPa) @ 500°F [260°C]
BHS BHC	Ideally used to isolate gauge legs and gauge reading, allow sampling to take place without loss of material and provide extra pressure ports with isolation capabilities.	ASTM A182F 316 Stainless Steel or ASTM A105 forged single piece steel, plated	10,000 PSI (70,000 kPa) @ 100°F [38°C]	4,000 PSI (28,000 kPa) @ 500°F [260°C]
MHS MHC	Miniature size for applications where space is limited; test stand and general equipment.	ASTM A479 316 Stainless Steel or ASTM A108 Barstock Steel, Plated	6000 PSI (42,000 kPa) @ 100°F [38°C]	4000 PSI (28,000 kPa) @ 500°F [260°C]

Distributed by | Distribuido por :



ANYTHINGTM
≈ FLOWS ≈

INFO@ANYTHINGFLOWS.COM

WWW.ANYTHINGFLOWS.COM

Flow Control , our passion ®

Life Flows on TM



SCAN ME