

FIRESAFE 2-PC
DIRECT MOUNT

PED

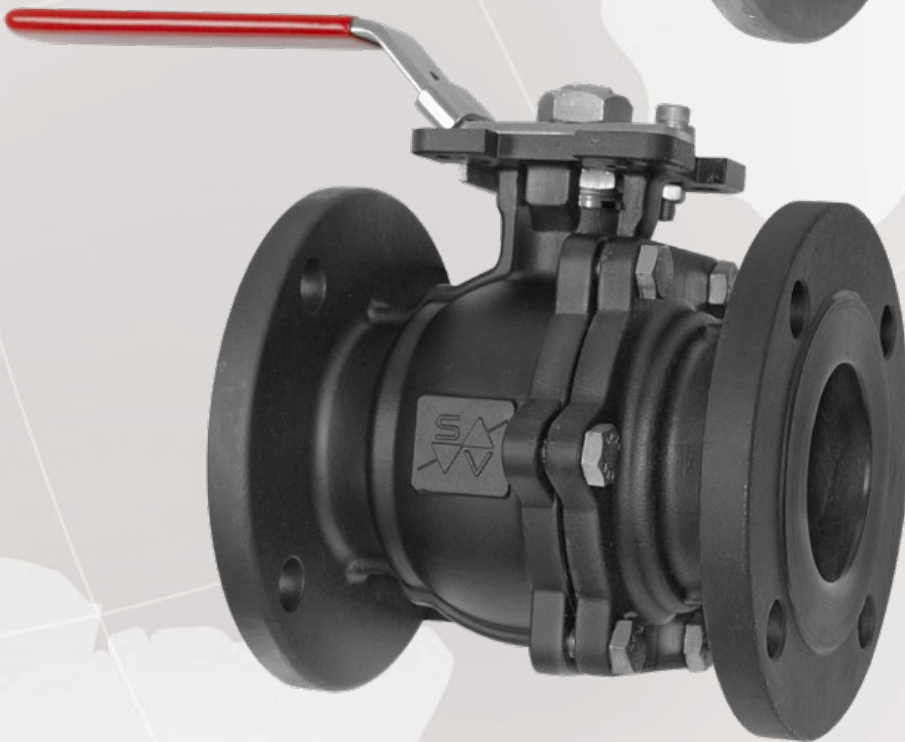
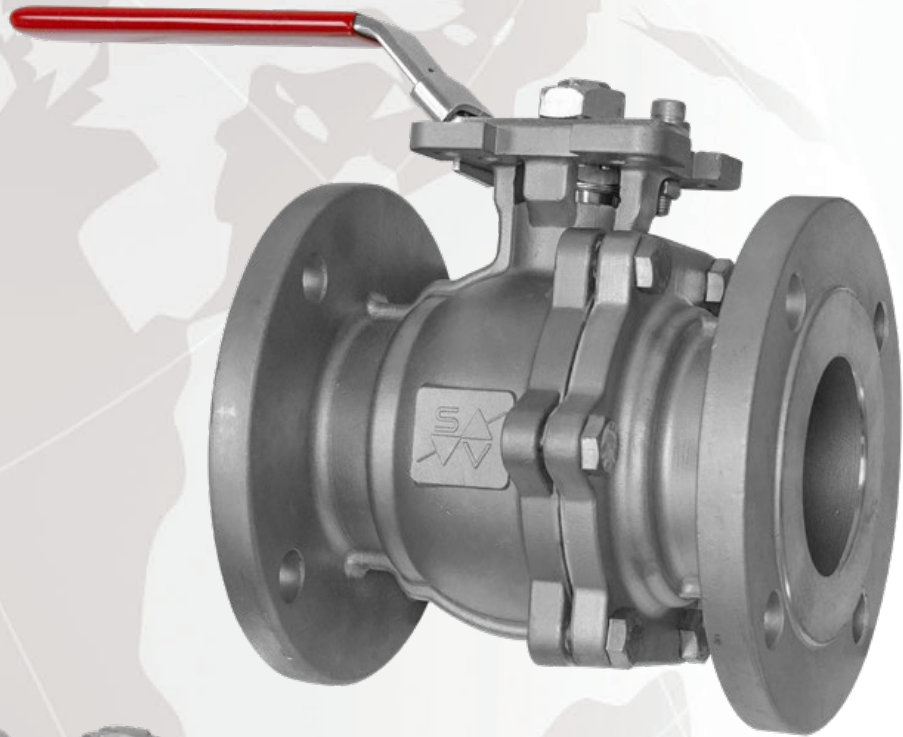


NACE



SIL₂
Safety Integrity Level

API
607



Technical Data

Example Part Number

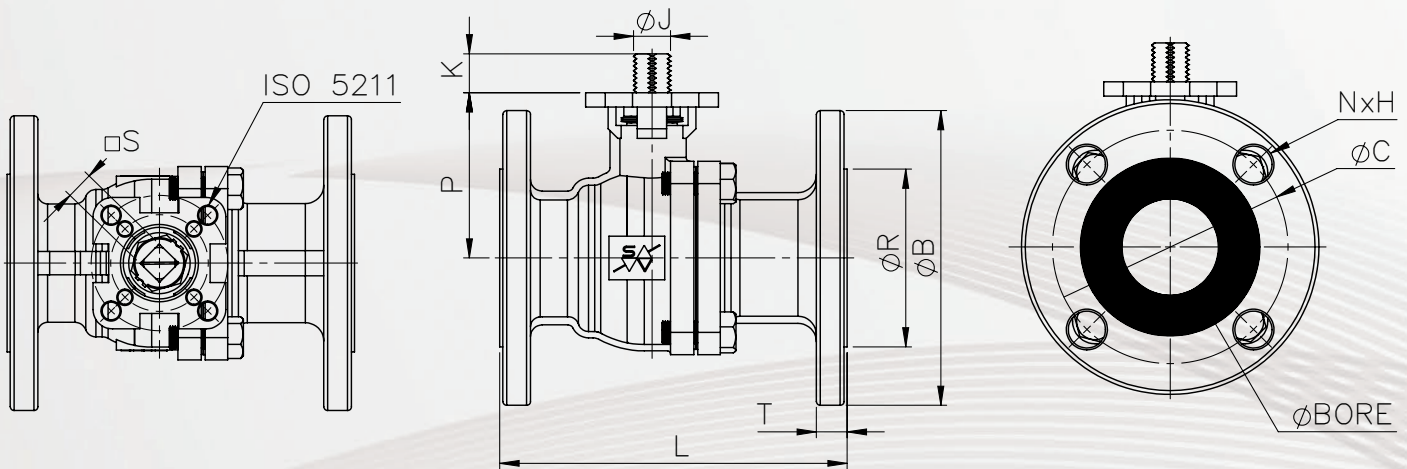
FIGURE	-	SIZE	-	BODY	TRIM	TYPE	SEATS	-	OPERATOR	-	SPECIAL
M15F	-	03	-	C	6	0	F	-	L	-	

EXAMPLE PART NUMBER: M15F-03-C60F-L

EXAMPLE DESCRIPTION: 3" FLOATING 2-PC CLASS 150 FULL PORT BALL VALVE, SESTO M15 SERIES, RF FLANGED ENDS, ASTM A216 GR WCB BODY, ASTM A351 CF8M BALL, ASTM A276-316 STEM, STANDARD BALL TYPE, TFM SEATS, VITON O-RING, GRAPHITE FIRE SAFE PACKING, AISI 304 SS BOLTS, API 607, NACE, LOCKING LEVER OPERATOR

FIGURE	-	SIZE	-	BODY
M15F - FLOATING 2-PC 150# FLANGED BALL VALVE, FULL BORE	-	0Q - 1/4" 0R - 3/8" 0M - 1/2" 0T - 3/4"	-	01 - 1" 1Q - 1 1/4" 1M - 1 1/2" 02 - 2"
	-	2M - 2 1/2" 03 - 3" 04 - 4"	-	C - ASTM A216 GR WCB S - ASTM A351 CF8M 9 - SPECIAL

TRIM	TYPE	SEATS	-	OPERATOR	-	SPECIAL
6 - 316 SS BALL / 316 SS STEM 7 - 316 SS BALL / 17-4PH STEM 8 - 304 SS BALL / 304 SS STEM 9 - SPECIAL	0 - STANDARD V - V-PORT BALL P - OPEN PORT BALL S - SLOTTED BALL R - RELIEF VENTED BALL T - TEFLON IMPREGNATED BALL 9 - SPECIAL	F - TFM 1600 C - CTFE R - RTFE G - TFM4215	-	S - 50/50 M - MTFE T - PTFE 9 - SPECIAL	-	L - LOCKING LEVER N - BARE STEM 9 - SPECIAL
			-		-	CONSULT FACTORY



Dimensions

SIZE (in)	BORE D (in)	□S (in)	ØJ (in)	K (in)	L (in)	P (in)	T (in)	ØR (in)	ØC (in)	ØB (in)	H (in)	N	ISO 5211	CV	WEIGHT (lb)
1/2"	0.59	0.35	0.47	0.35	4.25	1.95	0.38	1.38	2.38	3.50	0.62	4	F03-F04	15	3.6
3/4"	0.79	0.35	0.47	0.35	4.61	2.13	0.41	1.69	2.75	3.88	0.62	4	F03-F04	35	4.3
1"	0.98	0.43	0.55	0.57	5.00	2.34	0.44	2.00	3.12	4.25	0.62	4	F04-F05	68	5.8
1 1/4"	1.26	0.43	0.55	0.57	5.51	2.83	0.50	2.50	3.50	4.63	0.63	4	F04-F05	110	8
1 1/2"	1.57	0.55	0.75	0.73	6.50	2.68	0.56	2.88	3.88	5.00	0.62	4	F05-F07	155	11.8
2"	1.97	0.55	0.75	0.73	7.00	3.35	0.62	3.62	4.75	6.00	0.75	4	F05-F07	300	18.2
2 1/2"	2.56	0.67	0.87	0.83	7.50	4.09	0.69	4.12	5.50	7.00	0.75	4	F07-F10	500	27.8
3"	2.99	0.67	0.87	0.82	8.00	4.42	0.75	5.00	6.00	7.50	0.75	4	F07-F10	600	33.8
4"	3.94	0.87	1.10	1.20	9.00	5.33	0.94	6.19	7.50	9.00	0.75	8	F10-F12	1015	62.4

Torques

TFM 1600	PTFE	RTFE	CTFE	50/50
60	60	60	90	96
79	79	79	119	126
123	123	123	184	197
170	170	170	255	272
277	277	277	416	443
350	350	350	525	560
611	611	611	917	978
785	785	785	1178	1256
938	938	938	1407	1501

Sesto Valves may change dimensions without any notice.

Raw torques shown in inch-pounds. Minimum 30% safety factor should be added for actuator sizing.

Features and Benefits

Class 150
 Size Range 1/2" thru 4" Full Bore
 ISO 5211 Direct Mount Pad
 Body Wall Thickness ASME B16.34
 End Connections: RF Flanged
 Fugitive Emissions ISO 15848
 Firesafe Tested API 607
 Anti-Static Device and Live-Loaded Packing
 Blowout Proof, Low Torque Guided Stem
 Design
 Wide Range of Soft and Metal Seated Options
 Manual, Electric, Pneumatic Operators
 Globally Certified and Approved

Versatility & Reliability

The Sesto Valves M15 Series direct mount flanged floating ball valve design starts with a high quality investment cast body, designed and tested in compliance with ASME B16.34 standards. Precision machined surfaces and tighter manufacturing tolerances allow for precise assembly and fitting of body components and seals. Because of reduced dimensional variations, seats can be designed for minimal compression. This results in lower, more consistent torques and longer seat life. Every valve is factory tested and serialized for quality control and traceability.

Certifications and Compliance

Sesto Valves are designed and manufactured to internationally recognized standards including but not limited to the following:

Fire Testing: API 607 Certified

Testing: API 598, API 6D, ISO 15848, B56361, ISO 5208

Design: ANSI B16.34, ANSI B16.5, ANSI B16.10, NACE MR0175, API 608

Markings: MSS-SP-25, PED, NACE

Certifications: API 607, SIL, NACE, PED, ISO 15848

Materials

Body: ASTM A216 GR WCB, ASTM A351 CF8M

Ball: ASTM A351 CF8, ASTM A351 CF8M

Stem: 304SS, 316 SS, 17-4PH

Seat: TFM, CTFM, PTFE, RTFE, CTFE, 50/50, MTFE, PCTFE, METAL

Bolts: AISI 304

Class 150
1/2" thru 4"



Why Sesto?

Sesto Engineered Design	The Sesto Difference
Design	The Sesto 2-PC Class 150 flanged ball valve is compliant to ASME B16.34. The wall thicknesses are designed thicker than industry standards. The body gaskets, seats, and stem are much larger than most competitor's designs.
Precision	Investment cast quality body with chemical composition and hardness controlled to meet NACE standards. The sealing areas are machined to a tight tolerance of +/- .002". This allows for lesser compression on the seat thereby lowering torque.
Reliable	The precision machining, low seat compression, and oversized stem all work together to give use a consistent low torque design. Our Torques are monitored before each shipment to ensure repeatable, reliable performance. Each valve is tested and serialized to ensure the highest quality.
Certified	As with all Sesto Valves the 2-pc direct mount cast ball valve is API607 Fire Tested and certified. The Stem packing design is FE tested. They are NACE and SIL certified with global approvals. The wall thickness design is certified to meet ANSI Class 150 (285 PSI) and to meet the listed pressure marked on the valve bodies.

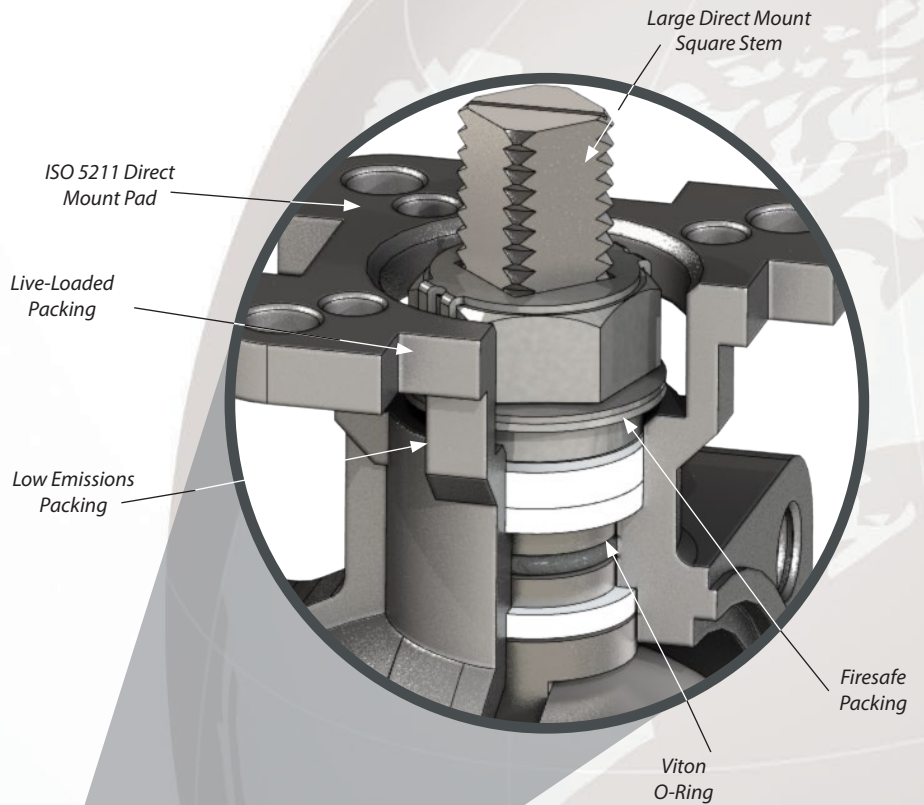
Globally Certified and Approved 2-PC Flanged Ball Valves

Firesafe 2-PC Direct Mount Flanged ANSI Class 150

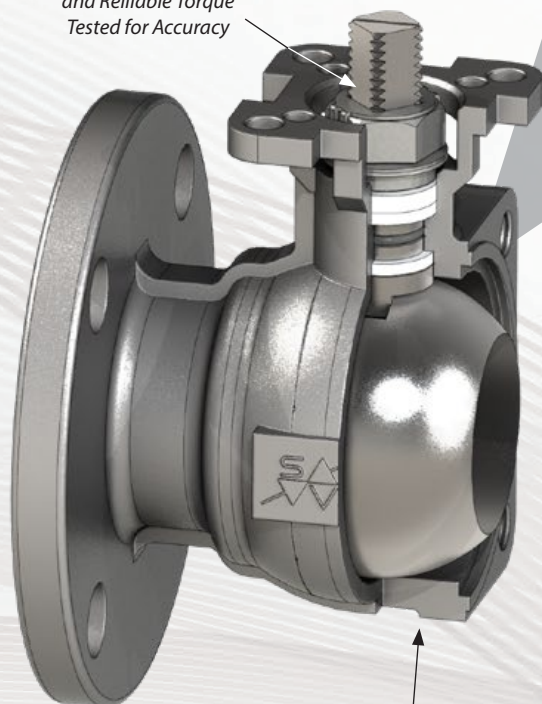
ASME B16.34, API 607, API 598 / ISO 15848, NACE, SIL
Torques and Tolerances Verified for Consistency

Stem Design

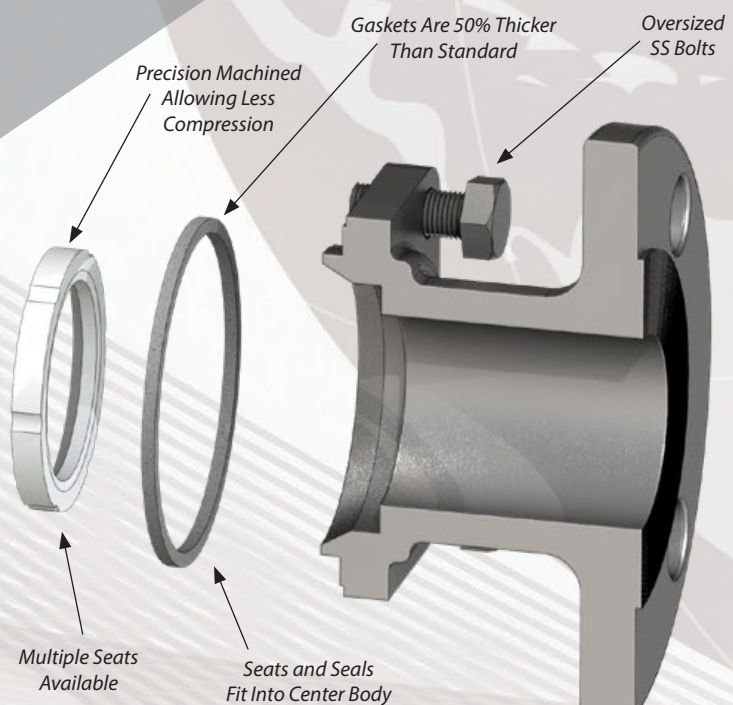
Sesto 2-pc flanged direct mount ball valves are made for the heavy demands of automation. The stem is designed for smooth cycling, high MAST value, and made to last for millions of cycles. We have the largest stem design in the industry.



Smooth, Consistent, and Reliable Torque Tested for Accuracy



Body Wall Thickness Designed Above ASME B 16.34 Requirements



Available Seat Options



TFM - Standard

Modified PTFE blend for improved performance over PTFE at higher temperatures, better shape recovery and smoother sealing surfaces



CTFE - Carbon Filled TFE

Virgin PTFE with added carbon content for improved performance over PTFE in steam applications



PTFE

Virgin PTFE with added mineral content for excellent performance in high temperature steam service, best steam service option



RTFE

High performance engineered polymer with good abrasion and chemical resistance even at high temperatures, great for oil & gas service

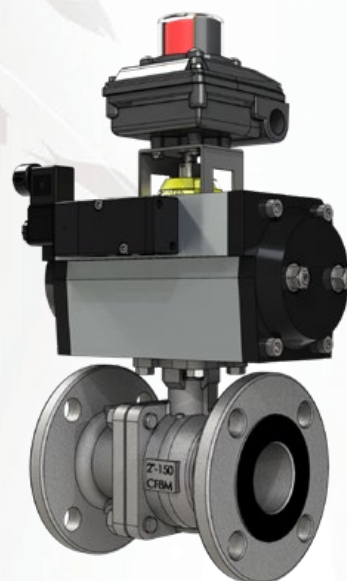


50/50 - 50% Stainless/ 50% TFE

Virgin PTFE and Stainless Steel composite, resulting in a highly lubricous yet abrasion resistant seat, good for steam and throttling applications

Direct Mount Low Torque Design

Larger stem and seats with much less compression and precision machined sealing areas give us a consistent and reliable lower torque than our competitors.



Fine-Tuned Design Details

(Four Unique Improvements to the Industry Standard)

1. Larger Stem

Higher margin of safety, more resistant to side loading and fatigue stress.

2. Gaskets to Fill the Gaps

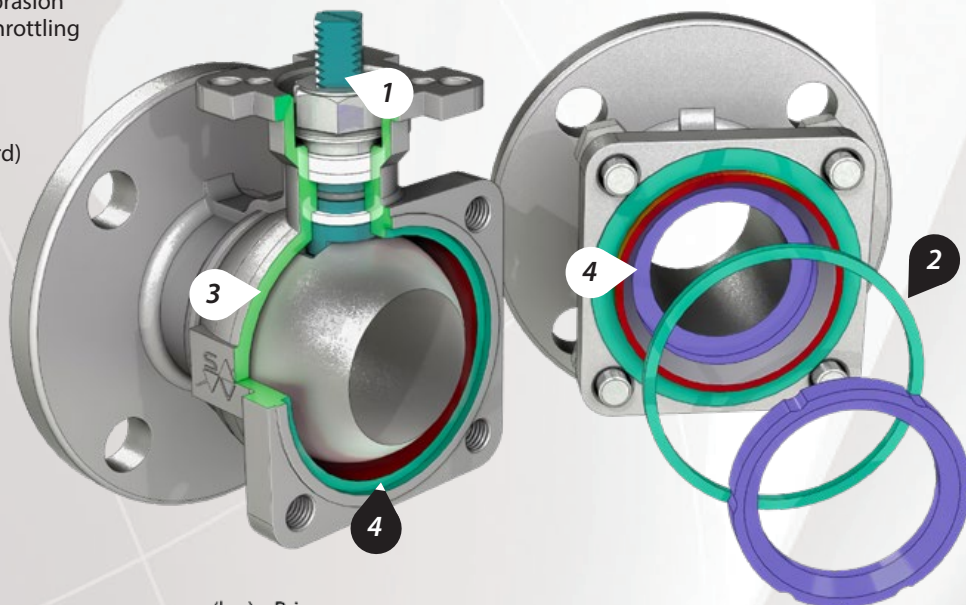
50% thicker than industry standard, graphite firesafe.

3. Thicker Body Walls

ASME B16.34 body wall thickness provides extra safety factor should the valve be overpressurized

4. Precision Machined Seal Areas

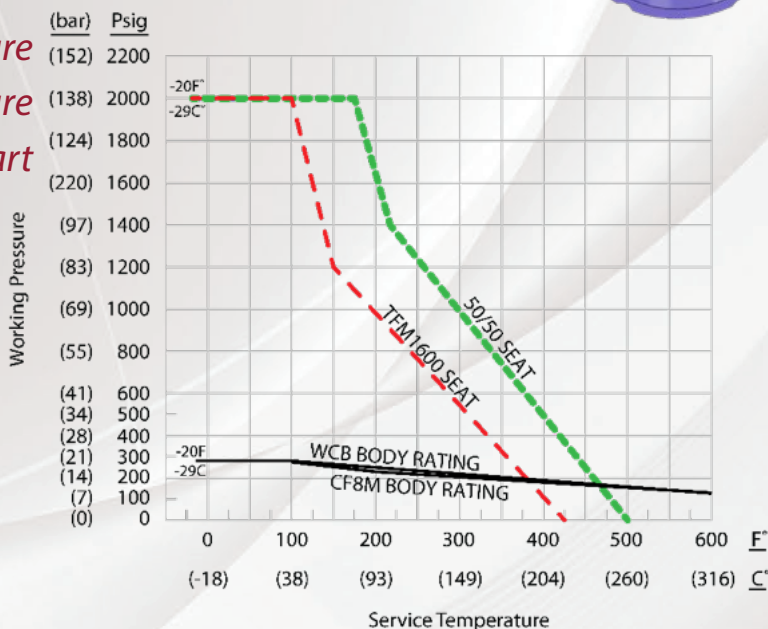
Less dimensional variation allows for less seat compression, resulting in lower and more consistent torques.



Testing Information

Sesto Valves focuses on delivering premium quality investment cast ball valves with reliable performance and highly repeatable torques. To ensure production quality and consistency, each valve is torque verified and shell/seal tested to API 598 testing standards. Additional testing including ISO 5208 (liquid or gas) or other customer specific testing protocols are available upon request. Periodic cycle testing is also performed to prove reliability in simulated real world applications/pressures/temperatures. Sesto Valves is an ISO 9001 certified manufacturer, and all valves are serialized for traceability and quality control.

Pressure Temperature Chart



Distributed by | Distribuido por :



ANYTHING
≈ FLOWS ≈

INFO@ANYTHINGFLOWS.COM

WWW.ANYTHINGFLOWS.COM

Flow Control , our passion ®

Life Flows on ™



SCAN ME