



## Low Temperature Gas Shutoff Valve (DC)

Stainless Steel Body • 1/4" to 1" NPT

2-Way Normally Closed

**2/2**  
**SERIES**  
**HV426716**  
**HV426780**  
**HV285926**

### Features

- Ambient temperature range; -40°F to 125°F (-40°C to 52°C)
- Zero minimum differential pressure
- Maximum operating pressure differential up to 50 psi
- Robust design provides consistent and reliable operation
- Meets Automatic Gas Valves Z21.21, CSA 6.5 C/I Safety Shutoff standard
- Complies with ANSI/ISA-12.27.01.2003 single seal requirements
- Meets the metallurgical requirements of NACE MR-0175
- Resilient soft seating for tight shutoff
- For on-off control of fuel gas in commercial and industrial gas burners

**Fluid:** Fuel Gas

### Construction

| Valve Parts in Contact with Fluids |  |
|------------------------------------|--|
| Body                               | 304 Stainless Steel  |
| Seals and Disc                     | Low Temp. NBR (1/2", 3/4")<br>Low Temp. FKM (1/4", 3/8", 1") |
| Diaphragm                          | Low Temp. NBR (1/2", 3/4")<br>Low Temp. HNBR (1")            |
| Core Tube                          | 305 Stainless Steel  |
| Core and Plugnut                   | 430F Stainless Steel   |
| Springs                            | Inconel  |
| Rider Ring                         | PTFE   |

### Electrical

| Standard Coil and Class of Insulation | Watt Rating | Ambient Temp. °F (°C)         | Spare Coil Family |
|---------------------------------------|-------------|-------------------------------|-------------------|
|                                       | DC (Watts)  |                               | Explosionproof    |
| H                                     | 10.6        | -40 to 125°F<br>(-40 to 52°C) | 238514            |
|                                       | 11.6        |                               | 238914            |
| F                                     | 12.1        |                               | 274646            |

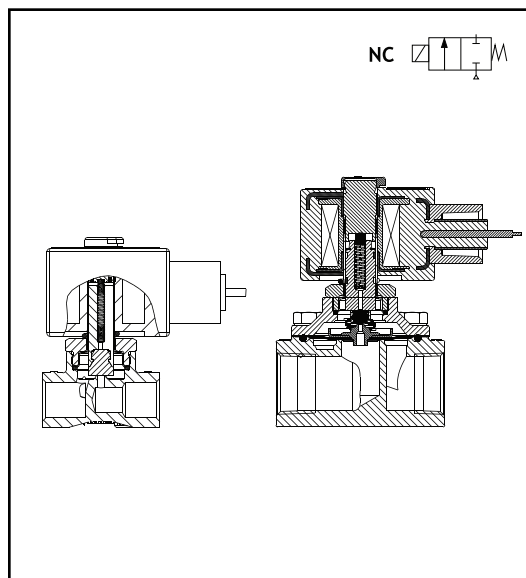
**Standard Voltages:** 12, 24VDC  
**Note:** Not for use with solenoid drivers or peak and hold external controllers.

### Solenoid Enclosures

Explosionproof & Watertight, Types 3, 3S, 4, 4X, 6, 6P, 7, and 9.

### Leads

**Standard:** 72" leads



### Approvals

CSA Certified:

- 1) Solenoid (for HV426716 & HV426780 Series DC Constructions), and valve (HV285926 DC Construction) for Hazardous Locations, File 013976.
  - 2) Automatic Gas Valves Z21.21, CSA 6.5 C/I Safety Shutoff, File 112872.
  - 3) Standard C22.2 No. 139 "Electrically Operated Valves", File 112872.
  - 4) ANSI/ISA-12.27.01.2003 Single Seal.
- Consult factory for Canadian Registration Numbers (CRN).*  
UL Listed Explosionproof Solenoid.  
(for HV426716 & HV426780 Series DC Constructions)

COMBUSTION

## Specifications

| Pipe Size (in)   | Orifice Size (in) | Cv Flow | Gas Capacity |           | Operating Pressure Differential (psi) ④ |      | Fluid Temp. Range °F (°C) ③ | Catalog Number | Voltage | Const. Ref. | Agency                   |                          | Wattage |
|--|-------------------|---------|--------------|-----------|---|------|-----------------------------|----------------|---------|-------------|--------------------------|--------------------------|---------|
|  |                   |         | Btu/hr. ①    | Btu/hr. ② | Min.                                    | Max. |                             |                |         |             | UL                       | CSA                      |         |
| COMBUSTION (Fuel Gas) - Normally Closed (Closed when de-energized) |                   |         |              |           |   |      |                             |                |         |             |                          |                          |         |
| 1/4  | 5/32              | 0.52    | 27,000       | 410,000   | 0                                       | 50   | -40 to 125°F (-40 to 52°C)  | HV426716001    | 12 VDC  | 1           | <input type="checkbox"/> | <input type="checkbox"/> | 10.6    |
|  |                   |         |              |           |   |      |                             | HV426716002    | 24 VDC  |             | <input type="checkbox"/> | <input type="checkbox"/> |         |
| 3/8  | 7/32              | 0.82    | 44,000       | 527,000   | 0                                       | 35   | -40 to 125°F (-40 to 52°C)  | HV426716101    | 12 VDC  |             | <input type="checkbox"/> | <input type="checkbox"/> |         |
|  |                   |         |              |           |   |      |                             | HV426716102    | 24 VDC  |             | <input type="checkbox"/> | <input type="checkbox"/> |         |
| 1/2  | 5/8               | 4.3     | 231,900      | 3,529,000 | 0                                       | 50   | 14 to 125°F (-10 to 52°C)   | HV426780001    | 12 VDC  | 2           | <input type="checkbox"/> | <input type="checkbox"/> | 11.6    |
|  |                   |         |              |           |   |      |                             | HV426780002    | 24 VDC  |             | <input type="checkbox"/> | <input type="checkbox"/> |         |
| 3/4  | 5/8               | 4.5     | 242,600      | 3,693,000 | 0                                       | 50   | 14 to 125°F (-10 to 52°C)   | HV426780101    | 12 VDC  |             | <input type="checkbox"/> | <input type="checkbox"/> |         |
|  |                   |         |              |           |   |      |                             | HV426780102    | 24 VDC  |             | <input type="checkbox"/> | <input type="checkbox"/> |         |
| 1  | 1                 | 13      | 701,000      | 8,268,480 | 0                                       | 50   | 14 to 125°F (-10 to 52°C)   | HV285926011    | 12 VDC  | 3           | -                        | <input type="checkbox"/> | 12.1    |
|  |                   |         |              |           |   |      |                             | HV285926012    | 24 VDC  |             | -                        | <input type="checkbox"/> |         |

○ = Safety Shutoff Valve. □ UL Listed Hazardous Location, solenoid only. ① 1" W.C. Drop @ 2" W.C. Inlet Pressure, 1,000 Btu/cu.ft. or more, 0.64 Specific Gravity Gas.

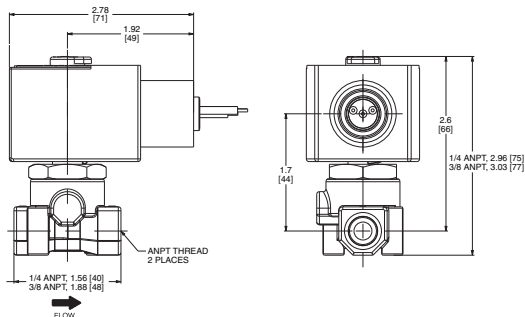
② 10% of MOPD pressure drop @ 25% of MOPD inlet pressure, 1,000 Btu/cu.ft. or more, 0.64 Specific Gravity Gas (based on CSA 6.5).

③ Dewpoint - To prevent freezing of condensed water vapor in the valve, the fuel gas must have a dewpoint at least 10°C (18°F) below the minimum temperature to which any point of the system will be exposed.

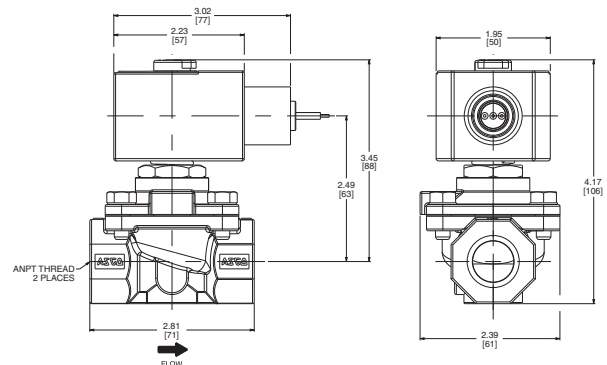
④ Safe Working Pressure (SWP); 100 psi, is the line or system pressure to which the valve may be subjected without being damaged. To ensure proper operation, the Maximum Operating Pressure Differential (MOPD) stamped on nameplate must be adhered to.

## Dimensions: inches [mm]

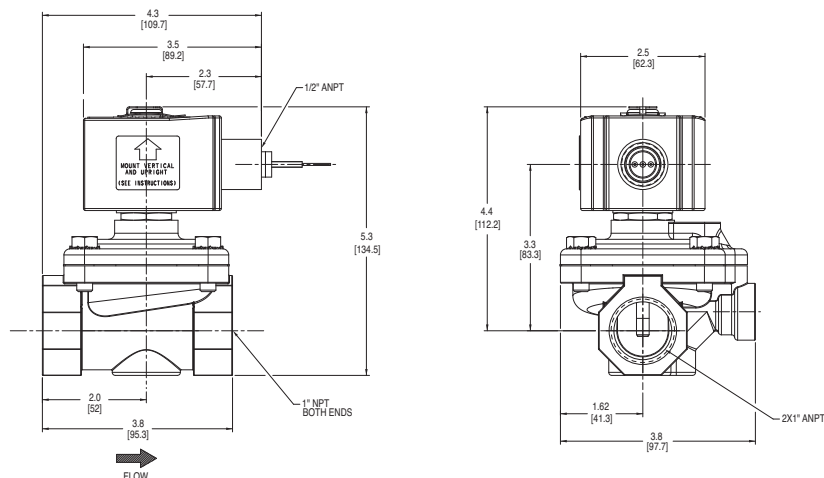
**Const. Ref. 1**  
Can be mounted in any position.



**Const. Ref. 2**  
Can be mounted in any position.



**Const. Ref. 3**  
Must be mounted with solenoid vertical and upright



Distributed by | Distribuido por :



**ANYTHING<sup>TM</sup>**  
**≈ FLOWS ≈**

[INFO@ANYTHINGFLOWS.COM](mailto:INFO@ANYTHINGFLOWS.COM)

[WWW.ANYTHINGFLOWS.COM](http://WWW.ANYTHINGFLOWS.COM)

**Flow Control , our passion ®**

**Life Flows on <sup>TM</sup>**



**SCAN ME**